

Cloning the Touchscreen to the Projector

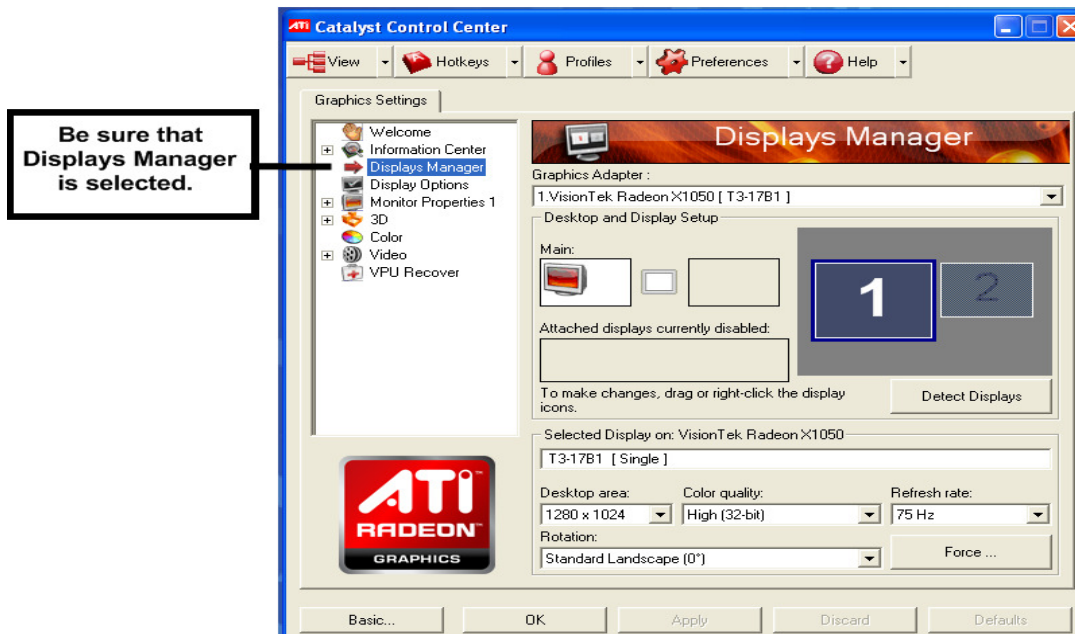
(for when only 1 is displaying the desktop)

The easiest way to avoid having to do this, is to be sure that both the Touch Screen monitor cable and the Projector cable are plugged into the computer prior to starting the system. If at any time you start the system with only 1 display attached, it will lose the 'cloning' information and you will have to follow this procedure to reset it.

When you right-click on the desktop (somewhere that does not have an icon) you will see an option for either the 'ATI Catalyst Control Center' or 'Nvidia Control Panel' based on which video card is installed in your particular system. Follow the instructions below to clone the 2 displays so they are identical.

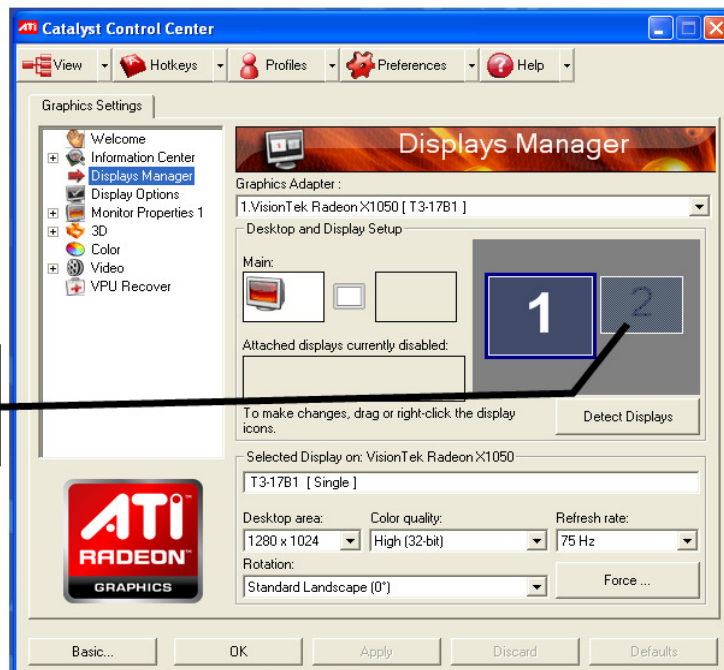
ATI Catalyst Control Center (known as CCC):

1. When you open the ATI CCC, you will see the following window. Be sure that the Displays Manager is selected. If it is not, then select it.



2. You then need to enable display 2, by selecting the box with the '2' in it and dragging it to the 'Attached displays currently disabled' box.

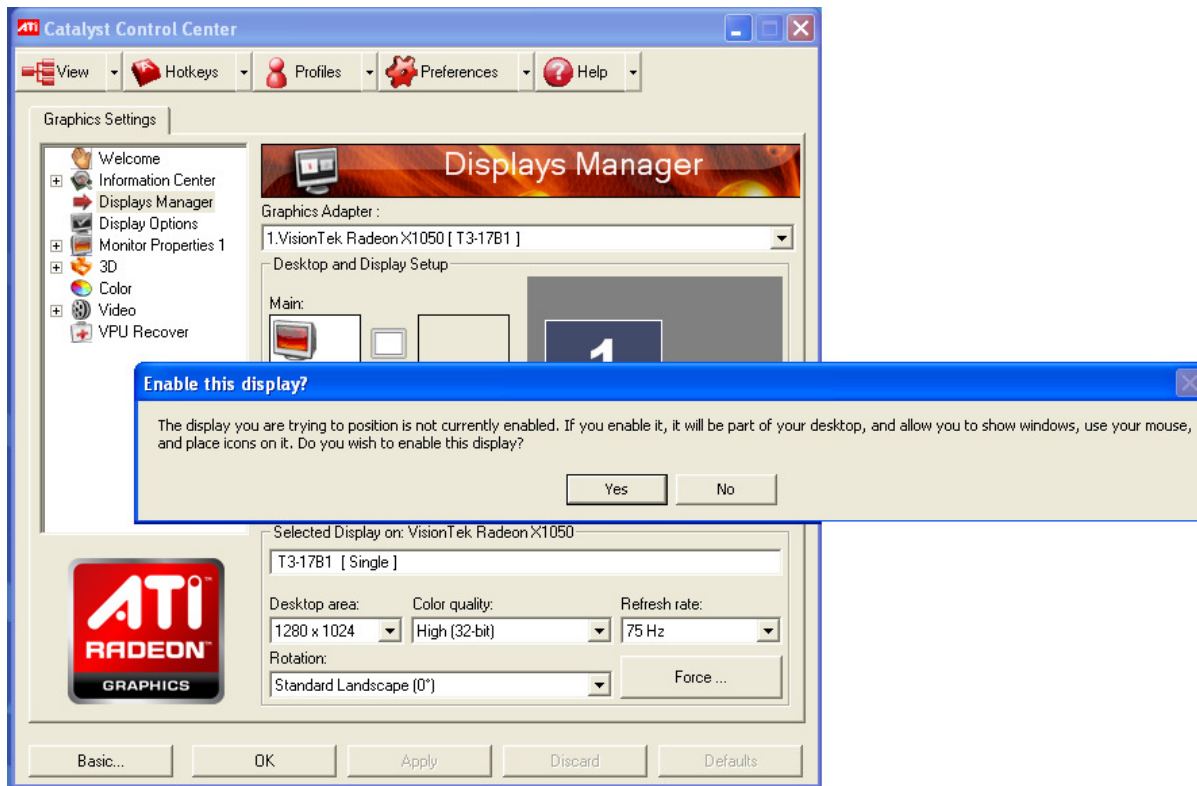
Left-Click on screen number 2 and hold mouse button down.



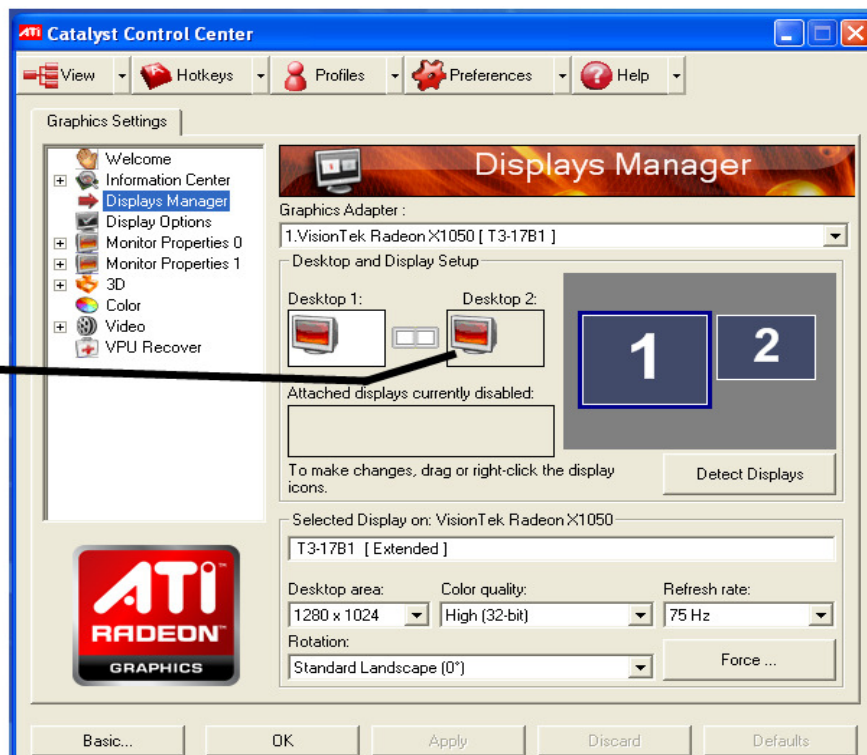
Drop the image into this square.



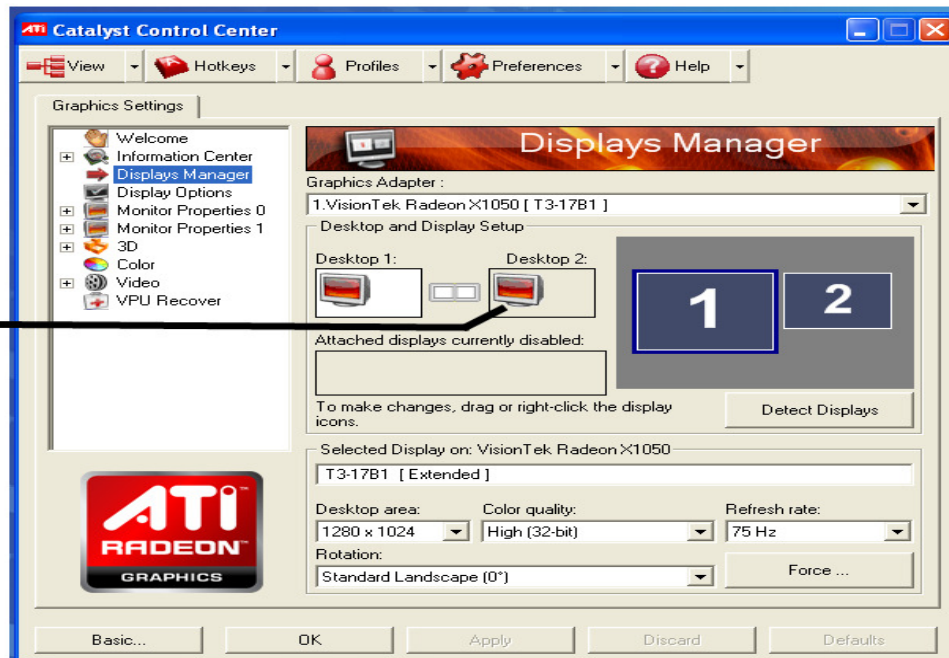
3. You will then be prompted if you'd like to enable the display.



4. Select 'Yes' to enable the 2nd display.
5. You will now notice that Display 2 is present in the Desktop and Display boxes.



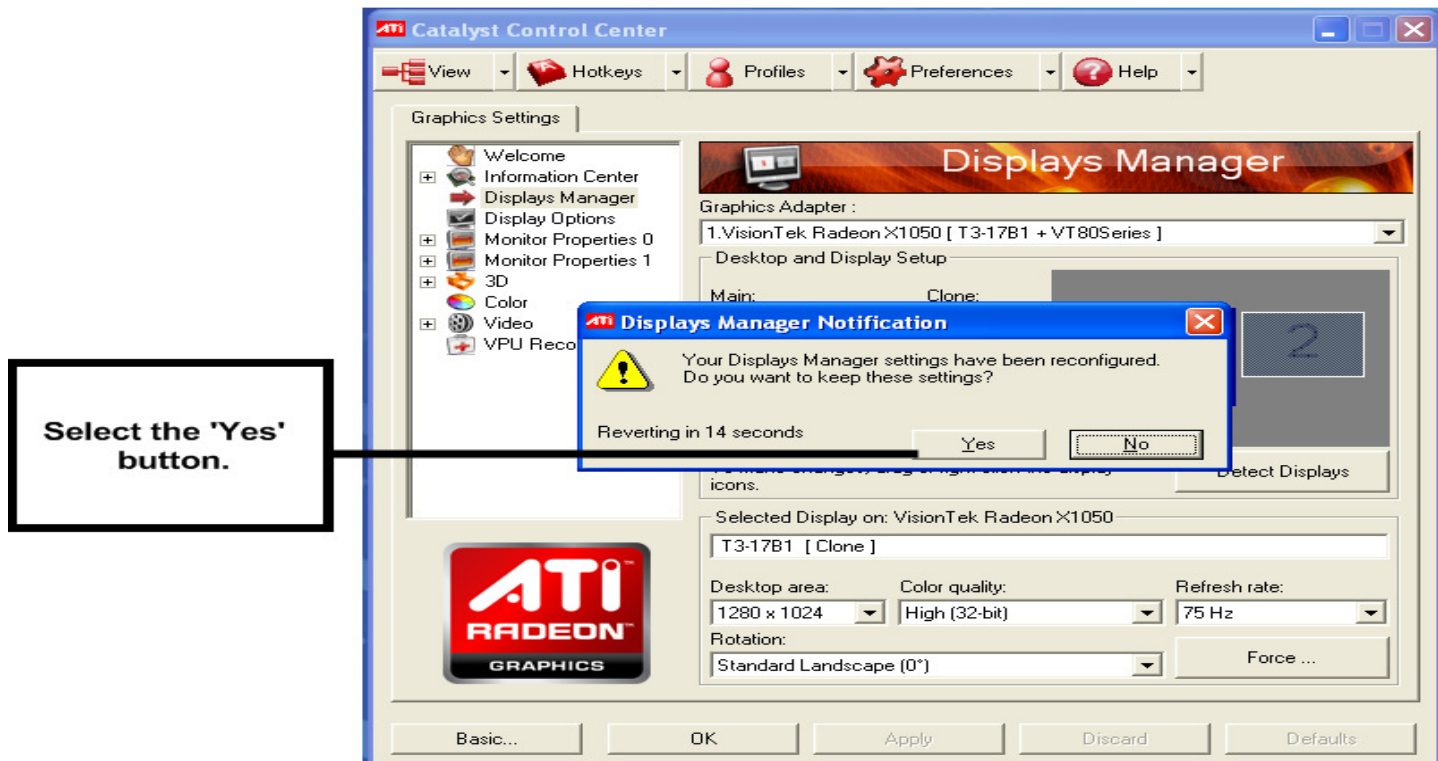
6. Now that the computer is aware that there are 2 displays active, let's clone them so they have the same image on both. Right-click on the Desktop 2 icon.



7. You will get the following menu when you do so:



8. When you select the 'Clone Desktop 1 with monitor', the screen will flash and when it re-appears you'll be prompted to save your changes. Select the 'Yes' button.



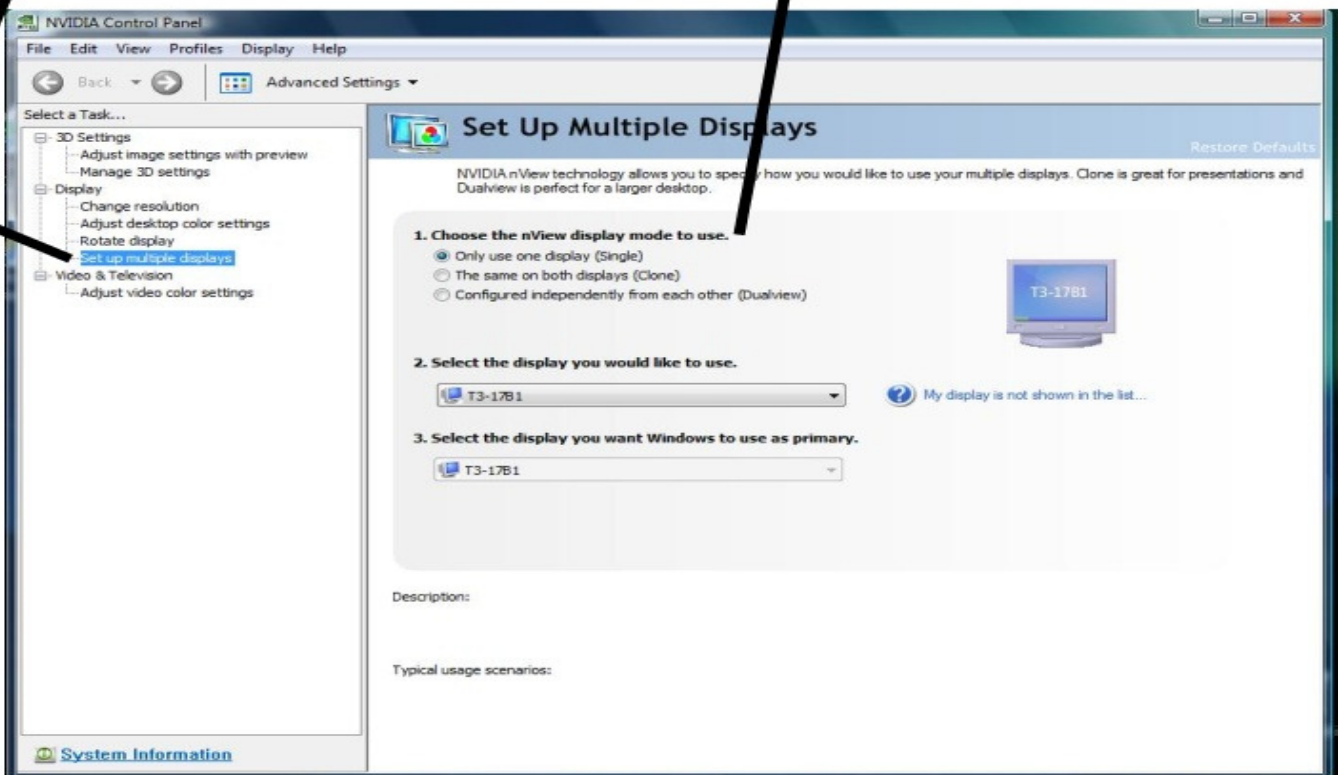
9. That's all. You've successfully cloned the monitors and they should appear identically now.

NVIDIA Control Panel:

1. If you are not showing Multiple displays listed under 'Choose the nView display mode to use', then your computer does not recognize that you have multiple display items attached to it. Please check that all display items (monitors, touch screens, projectors, etc.) are connected to the computer, connected to the device and plugged in.
2. Select the 'Set up multiple displays' option.

If 'Set up multiple displays' is not selected. Then click on this option.

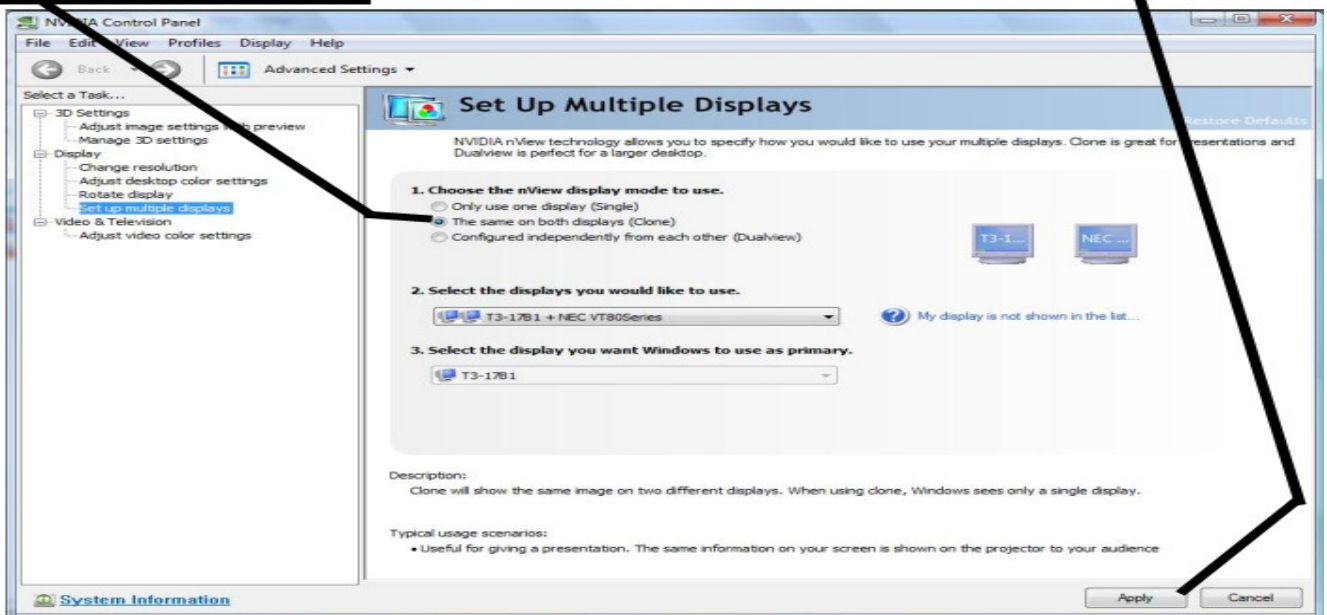
If you do not have more than 1 option here, then the computer is not recognizing more than 1 display option. Check cables.



3. Change the 'Choose the nView display mode to use' so it is set to 'The same on both displays (Clone)'. You'll notice when you do so that 2 buttons will appear in the lower right corner. Choose the 'Apply button'.

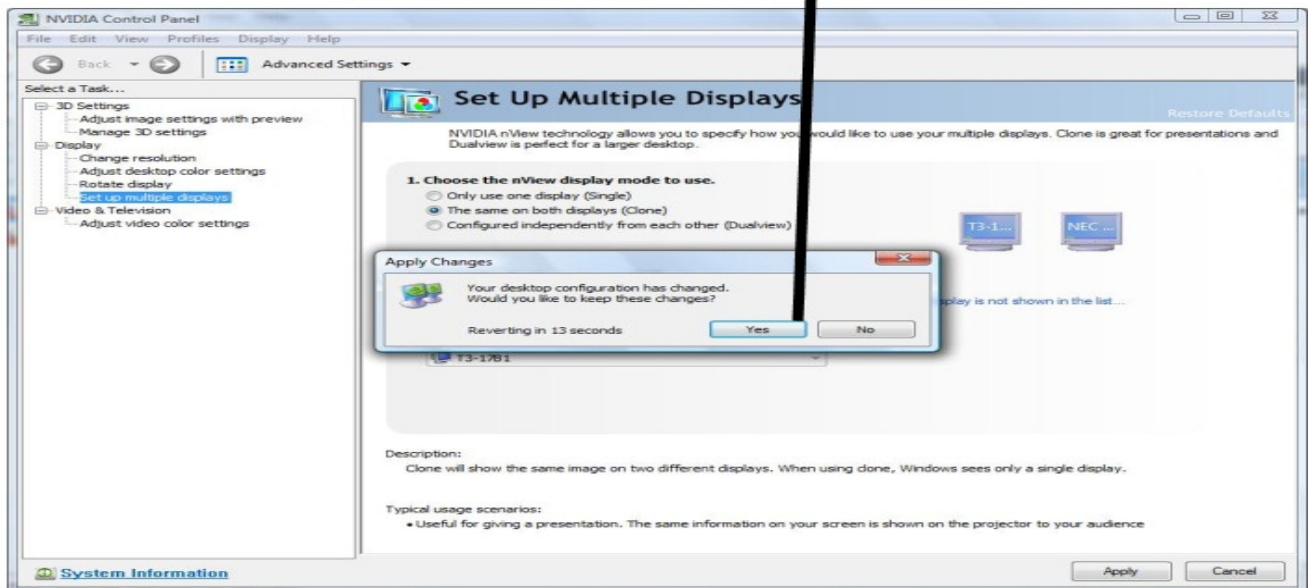
Select to have 'The same on both displays (Clone)'

Note that once you select to 'clone' the monitors, that the 'Apply' and 'Cancel' buttons will now appear as options.



4. Once you have clicked the 'Apply' button, you will be prompted to save your changes. Select the "Yes" button.

Select 'Yes' to save your changes.



5. That's all. You've successfully cloned the monitors and they should appear identically now.