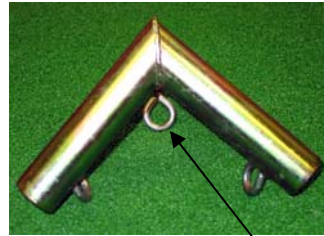


# 4' Cage Installation Instructions

## Important Notes (If you don't read these, your cage will not be square)

- 1) The F3 corner fittings are not symmetrical. It is important to use them all in the same manner or the cage will not be square.



- Look closely at the fitting. It is composed of a mitered corner joint with a butt joint attaching the third leg.
- The butt joint is the leg that must be used in the vertical orientation consistently on all four F3 fittings.



- 2) When placing the pipe in the FT fittings, first lay the pipe next to the fitting, estimate where the pipe should stop to be centered. Either mark with a pen or hold your finger on the estimated stop point. Insert the pipe to this point and tighten the screw eye. Centering the pipes in the FT fittings will help keep the cage square.

# Bill Of Materials:

Item Description	Qty
4' Pipe	20
4'6" Pipe	4
2' Pipe	4
F4	2
FC	12
FL	2
F3	4
FT	2
12" Toggle Bungee	6
6" Toggle Bungee	9
8" Hook Bungee	4



FC



F4



FL



FT



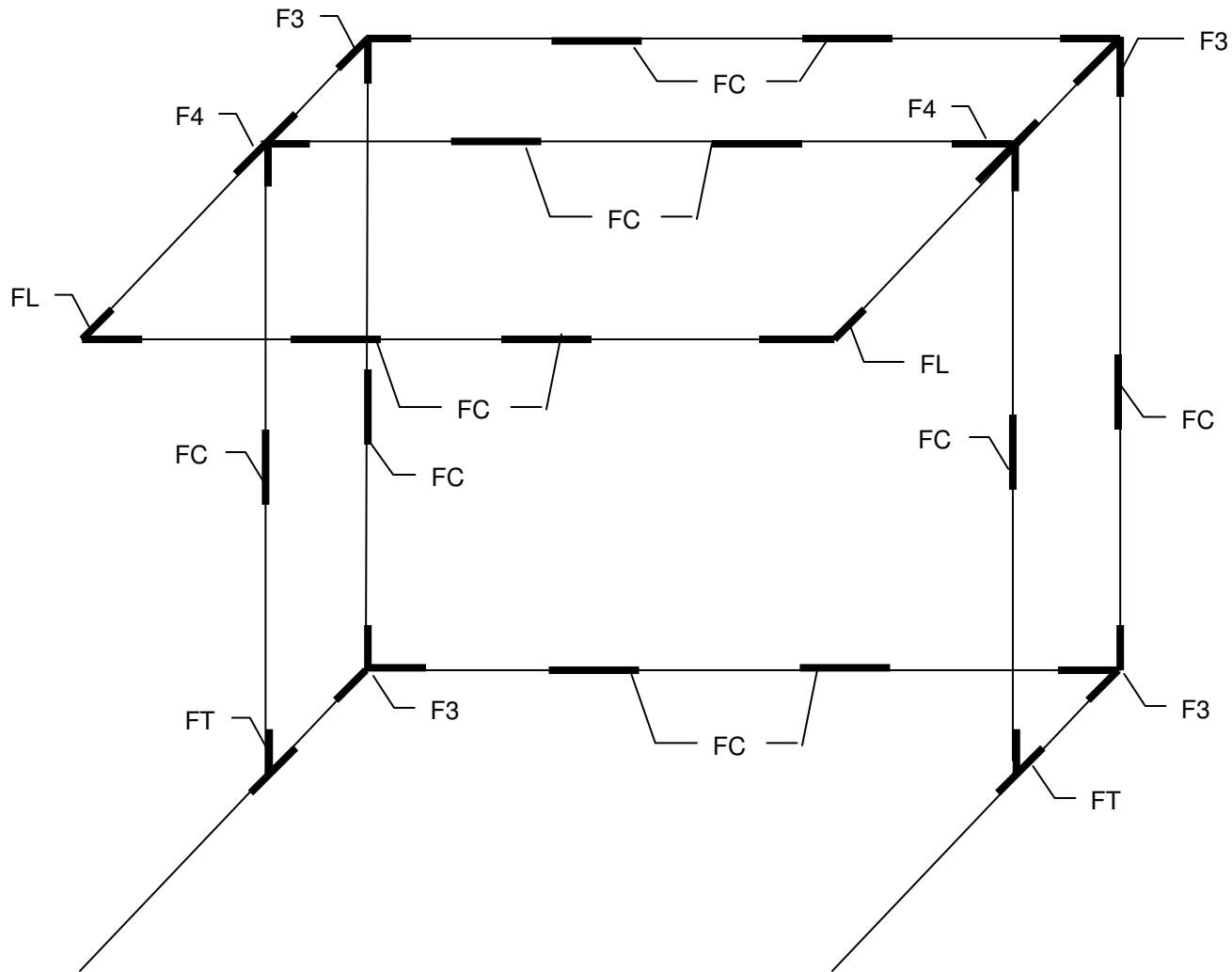
F3



Bungee Cords

Pipes not Pictured

# Overview of Cage Fittings & Pipes



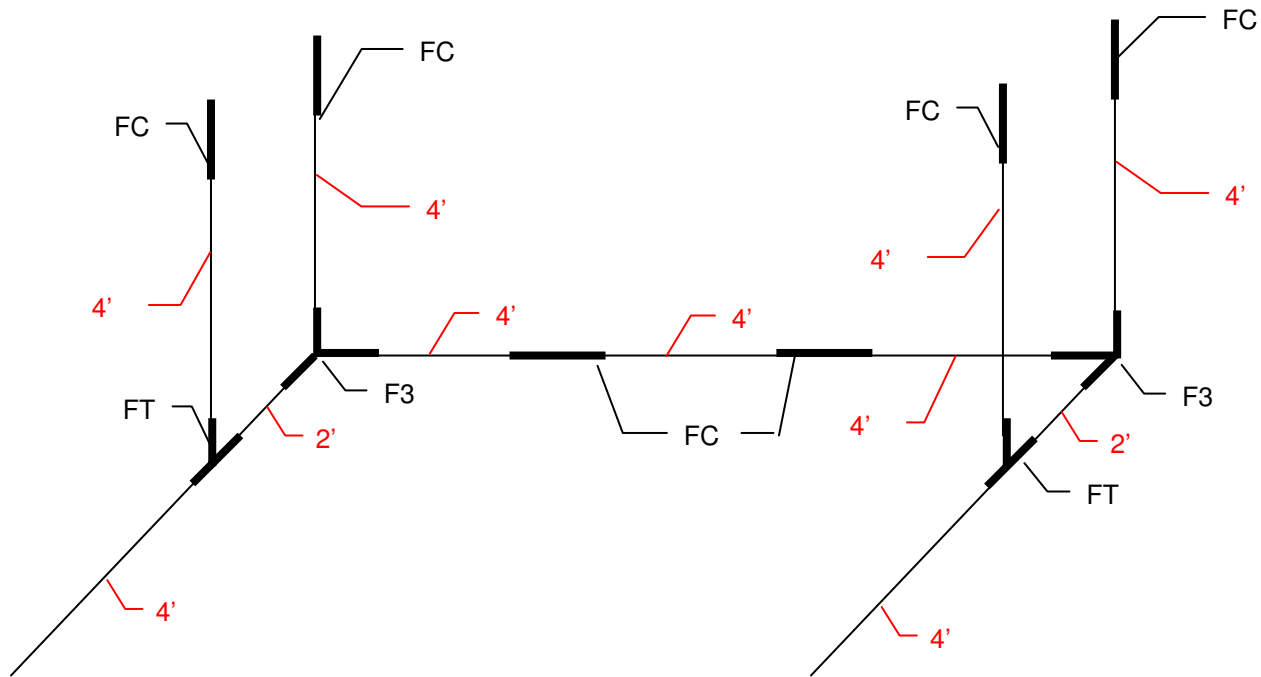
## Notes:

- 14 horizontal pipes are 4' long, the cage is 12' wide
- 4 Vertical pipes are 4' long and 4 vertical pipes are 5' long (the cage is 9' tall)
- 2 short pipes extend the floor depth 2' behind the screen for safety purposes

# Step 1

## Build Bottom Frame

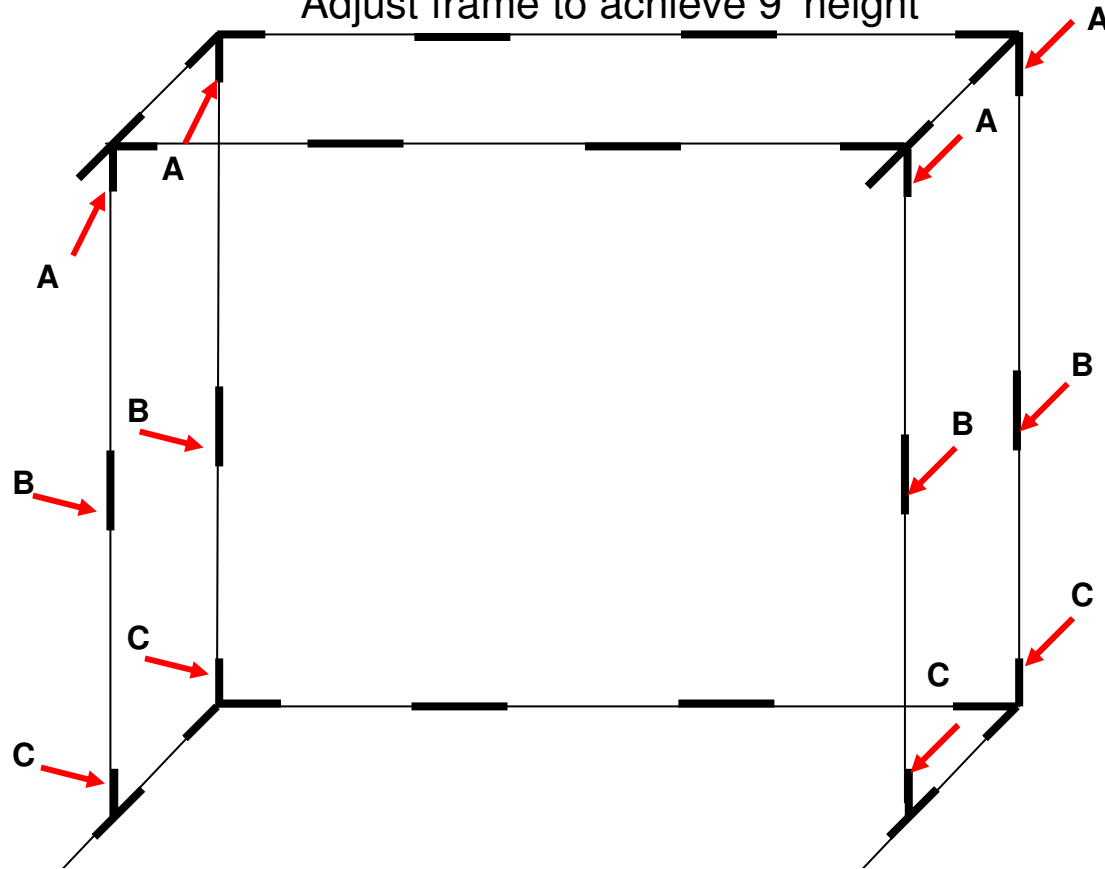
(Place the frame in the location you plan on using it.)





## Step 5

Adjust frame to achieve 9' height



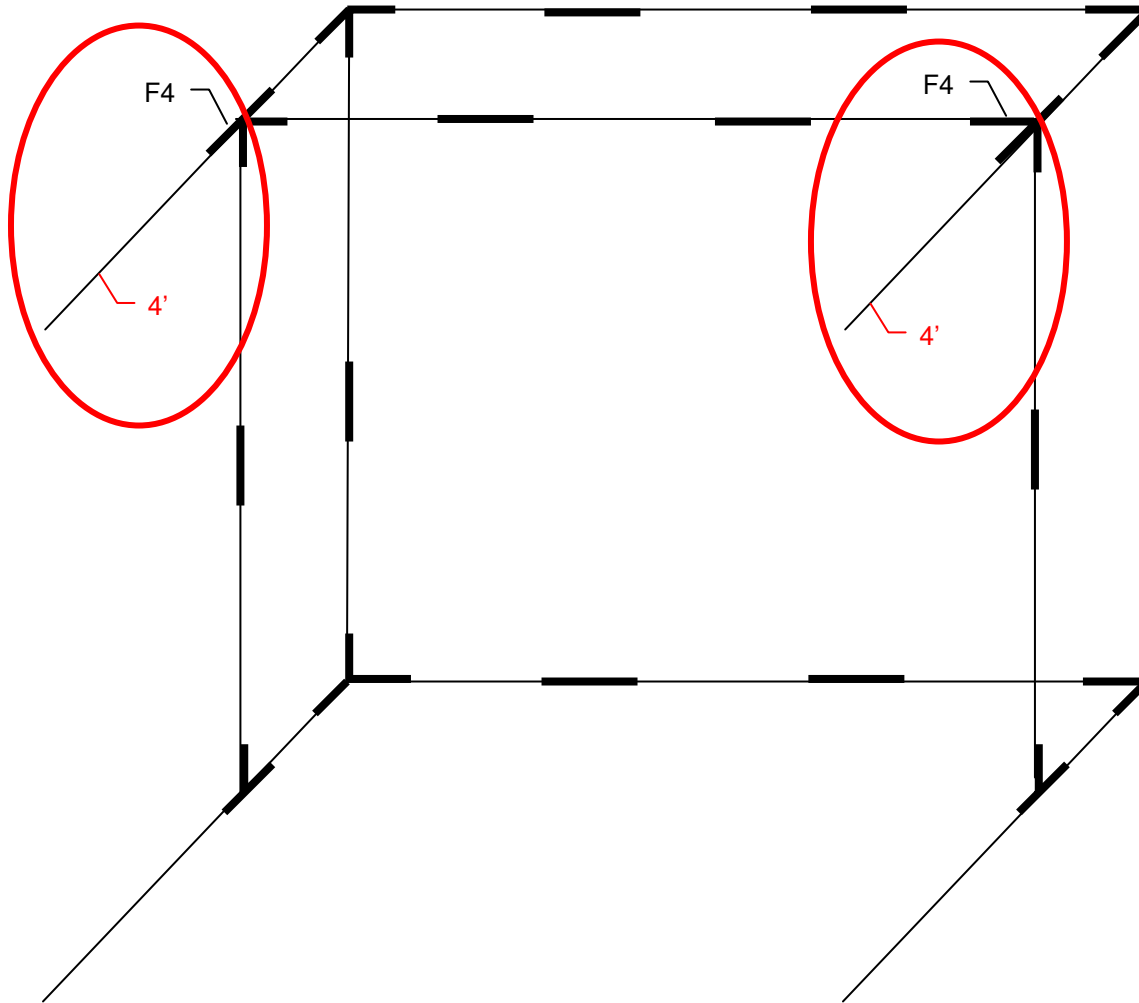
Loosen eyes at specified points one set at a time, working from the top (A) to the bottom (C).

Raise the frame by a maximum of 2" at each location. (Note: It is helpful to mark the pipe before you raise it so you can tell how much it has been raised.)

Do Not Raise the frame more than 8" or so that the projection screen is not touching the floor by at least 3".

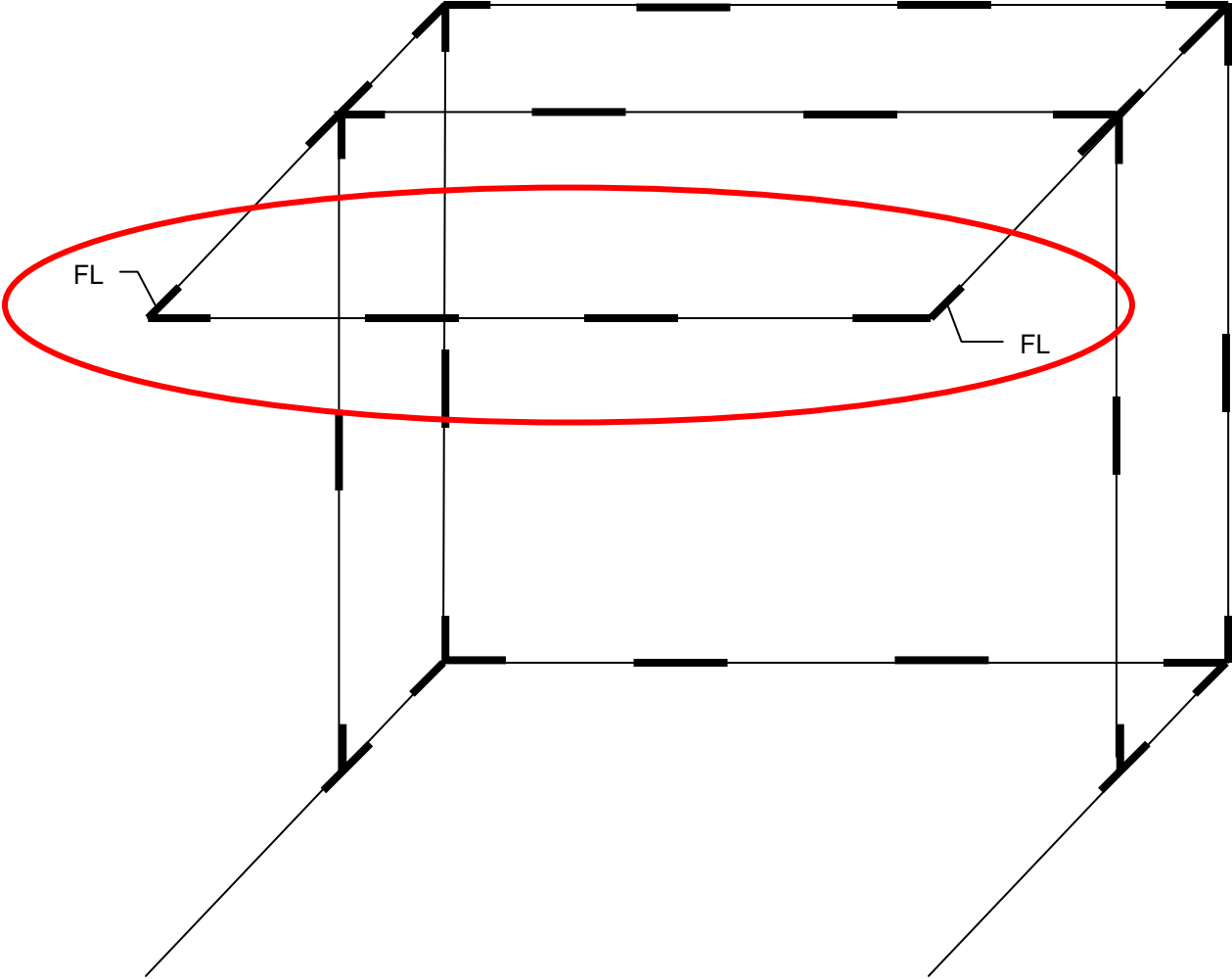
## Step 6

Attach Net Extension Poles to Top Frame



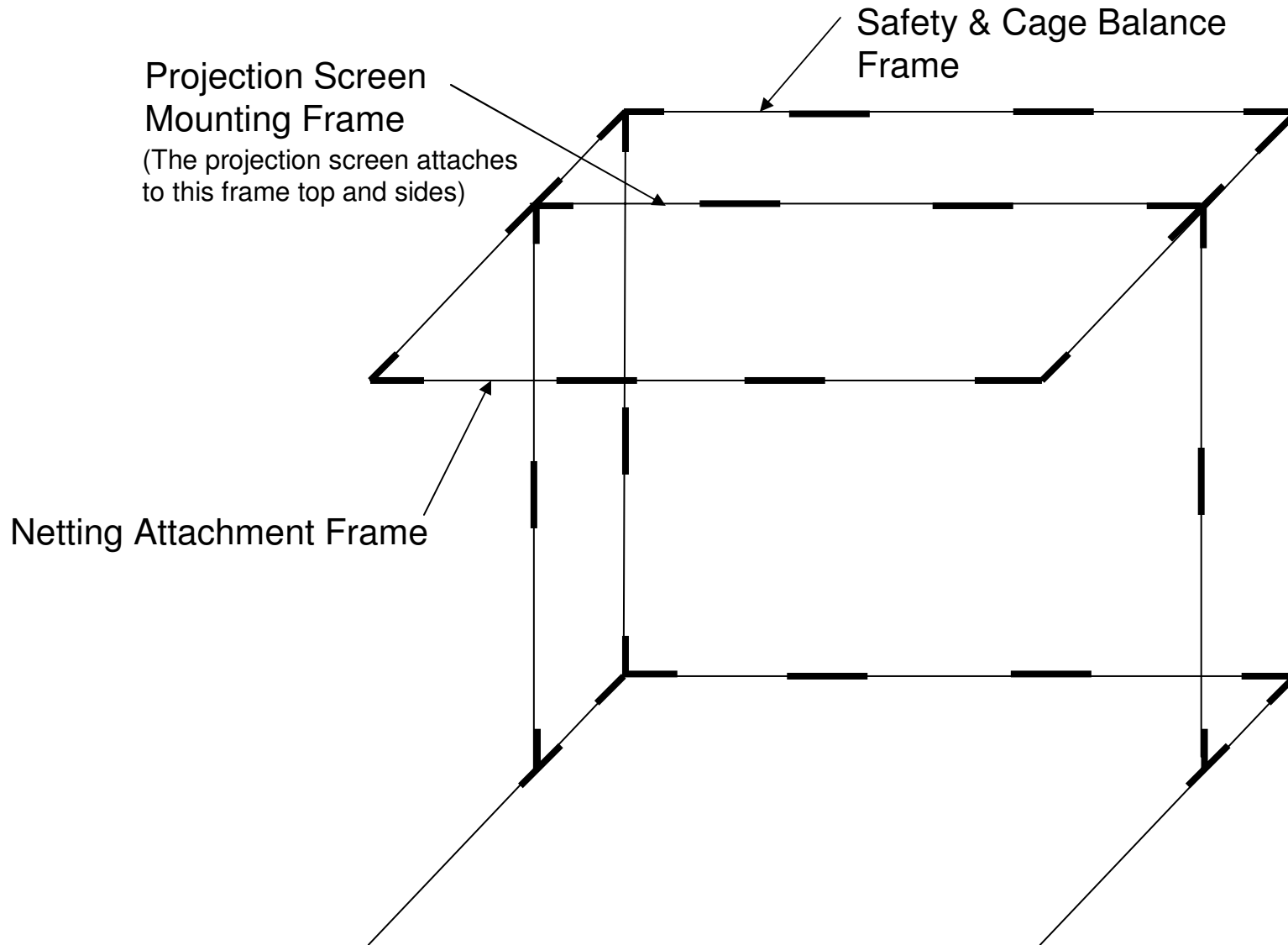
# Step 7

Attach Front Cross Bar (you built this in step 4)





**Figure A**



## Step 8

### Install Projection Screen

- 1) Unfold projection screen inside of the cage.
- 2) Place the screen and netting at the back of the projection screen mounting frame (see figure A on previous page) with the netting on top and attachment tabs facing up.
- 3) Lift the screen up to the projection screen mounting frame top bar and attach using provided 6" toggle bungee cords (fig 1).
- 4) Attach screen to the vertical pipes of the projection screen mounting frame using tabs and 12" toggle bungee cords (fig 2).
- 5) Position the ladder at a front corner of the cage, take the netting by the corresponding front corner and bring it up to the corresponding corner fitting of the net attachment frame (see figure A on previous page) Use an 8" hook bungee to attach the netting to the frame (fig 3).
- 6) Repeat the last step with the opposite corner making sure that the netting is centered.
- 7) Attach the netting to the netting attachment frame (fig 4).
- 8) Make sure all the netting & screen are touching the floor by at least 2" to ensure ball catchment.
- 9) Make any necessary adjustments.



Fig 1



Fig 2



Fig 3

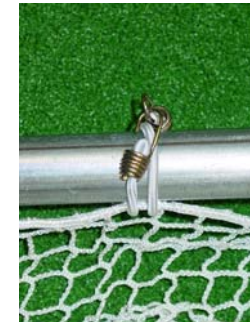


Fig 4

Attachment Tabs

## Completed Cage



We recommend to ceiling mount your projector a minimum of 12' from the screen. To completely fill the screen with an image distances will vary according to the throw of your projector.